

WASHINGTON



CRAFTSMAN ELEVATION



EURO COUNTRY ELEVATION



FARMHOUSE ELEVATION

The **Washington** is a shining star featuring 4 bedrooms, 3 3/4 bathrooms, loft, separate formal dining room, exquisite kitchen, great room with gas fireplace and volume ceilings, elegant master bedroom with 5-piece bath and 3-car tandem garage. Optional front courtyard, study, mudroom, bay window in dining room, outdoor living spaces, walk-in closets in bedroom 2 and 3, bedroom in lieu of the loft and upstairs laundry.

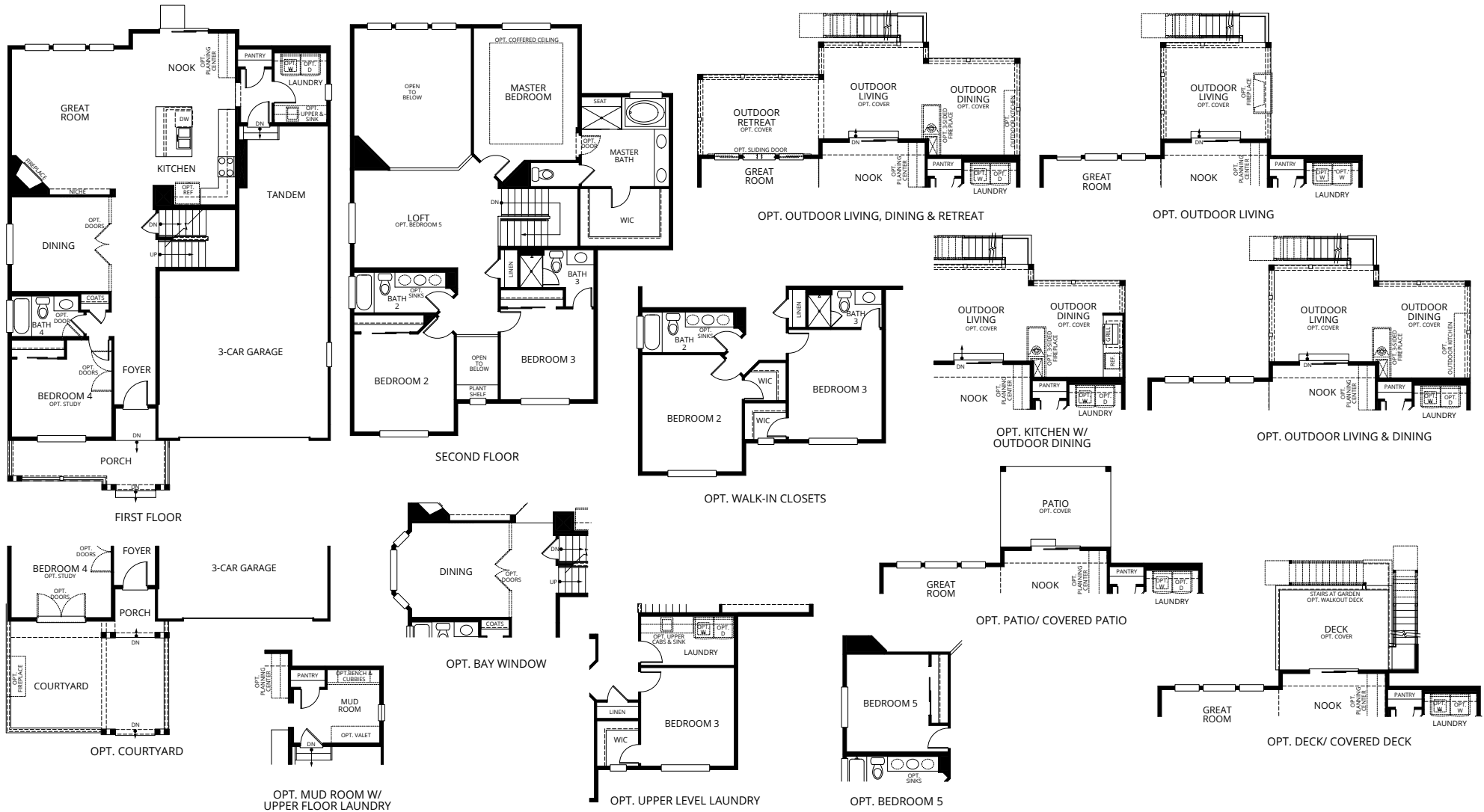


THE LAKES

AT CENTERRA

WASHINGTON - PLAN 3004 - 2,668 SQ. FT.

Two-Story | 4 Bedrooms | 3 3/4 Bathrooms | 3-Car Tandem Garage



THE LAKES AT CENTERRA MODELS & SALES CENTER | 2620 INDIAN GRASS PLACE, LOVELAND, CO 80538 | 970.999.5316

LYONCOLORADO.COM

